



# COLUMBIA BASIN TRUST GRANTING PROGRAMS GUIDE 2010/11

# COLUMBIA BASIN TRUST: SUPPORTING PEOPLE AND COMMUNITIES

Columbia Basin Trust (CBT) supports efforts by the people of the Canadian portion of the Columbia River Basin (Basin) to create a legacy of social, economic, and environmental well-being and to achieve greater self-sufficiency for present and future generations

Working closely with people who live in the Basin, CBT assists communities in addressing their needs by:

- focusing on local priorities and issues;
- bringing people together around key issues;
- providing useful, credible, accessible information;
- encouraging collaboration and partnerships;
- seeking ongoing input from Basin residents; and,
- providing resources and funding.

This year, CBT is committing \$15 million in direct funding benefits to Basin communities by delivering a range of programs and leading a variety of initiatives. CBT provides funding and grants through programs such as Arts, Culture, and Heritage, Business Advocacy, Environment, Scholarships and Community Development. CBT is also engaged in a number of Basin-wide initiatives, such as Affordable Housing, Climate Change, Environmental Education, Literacy, Land Conservation, and Youth Engagement. Learn more about this work online at [www.cbt.org/initiatives](http://www.cbt.org/initiatives).

This guide is an alphabetical listing of CBT's granting programs, which can also be found online at [www.cbt.org/programs](http://www.cbt.org/programs).

## GRANTING PROGRAMS GUIDE

<b>Arts, Culture and Heritage Program</b>	<b>3</b>
<b>Basin Business Advisors Program</b>	<b>3</b>
<b>CBT Sponsorship Program</b>	<b>4</b>
<b>College Community Service Award</b>	<b>4</b>
<b>Columbia Basin Youth Grants</b>	<b>5</b>
<b>Community Development Program</b>	<b>5</b>
<b>Community Initiatives and Affected Areas Programs</b>	<b>6</b>
<b>Endowment Support for Community Foundations</b>	<b>7</b>
<b>Enterprising Non-Profits Program</b>	<b>7</b>
<b>Environmental Initiatives Program (grants)</b>	<b>8</b>
<b>Summer Works Program</b>	<b>8</b>
<b>Training Fee Support</b>	<b>9</b>
<b>Youth Community Service Award</b>	<b>10</b>
<b>How to Contact Us</b>	<b>11</b>

## ARTS, CULTURE AND HERITAGE PROGRAM

The Columbia Kootenay Cultural Alliance delivers the arts, culture and heritage funding program on behalf of CBT. This program includes a number of funding streams including funding to individuals or groups through community arts councils, minor capital projects, touring, mentoring, exhibits and two major projects per year. CBT funds also support organizational development and assists in sponsoring the ArtStarts program in Basin schools.

### Who Can Apply

Funding is for all arts disciplines (visual art, theatre, music, dance, media, literary and inter-arts) and applications are invited from individuals, and arts, culture and heritage organizations.

### How to Apply

Contact Columbia Kootenay Cultural Alliance for details.

### Deadline for Applications

March 19 or April 1, 2010, depending on the program.

This program has an annual intake.

### CONTACT

Columbia Kootenay Cultural Alliance  
1.250.505.5505 or 1.877.505.7355  
[wkrac@telus.net](mailto:wkrac@telus.net)

Funding information and application forms are available online at [www.basinculture.com](http://www.basinculture.com).

## BASIN BUSINESS ADVISORS PROGRAM

The Basin Business Advisors Program (BBA) was created by CBT to build economic capacity in Basin communities by strengthening and supporting existing businesses. The BBA program assists small and medium sized independent business operators in the Basin by providing free one-to-one confidential business counselling and assessment services, and by arranging and cost-sharing specialized consulting services if recommended by BBA staff.

### Who Can Access the Service

Owners of established businesses in the Basin.

### How to Access the Service

Contact the Basin Business Advisor in your area or Steele O'Neil and Associates to arrange an appointment to meet with an advisor.

### Deadline for Applications

Applications ongoing.

### CONTACT

**West Kootenay Advocate:**  
Deanne Monroe 1.250.825.4171

**East Kootenay Advocate:**  
Will Nixon 1.250.427.2783

### Barbara O'Neil, Steele O'Neil & Associates Inc.

36 - 11th Avenue South, Cranbrook, B.C. V1C 2P1  
Telephone: 1.250.489.4180      Toll Free: 1.877.894.5939  
Email: [steeleoneil@telus.net](mailto:steeleoneil@telus.net)      <http://steeleoneil.com/Basin.html>

## CBT SPONSORSHIP PROGRAM

CBT's Sponsorship Program can quickly accommodate sponsorship requests to support community events or activities. Generally, approved amounts are small.

### Who Can Apply

Registered non-profit organizations, aboriginal bands, school districts, local government and recreation commissions and others that may be applicable at CBT's discretion.

### How to Apply

Contact a CBT Community Liaison in your area who will assist you to determine if your project is suitable

### Deadline for Applications

This is a continuous intake program. There are no deadlines for applications.

### CONTACT

CBT Community Liaison  
1.800.505.8998 or 1.250.365.6633  
[info@cbt.org](mailto:info@cbt.org)

## COLLEGE COMMUNITY SERVICE AWARD

CBT's College Community Service Awards (CCSA) are designed to assist Basin residents, who have taken a hiatus of at least one year after completing high school, in pursuing post-secondary education/training in the region, and to reward and encourage volunteerism. These Community Service Awards are based on volunteer service, not on academic achievement.

Volunteer service refers to a significant contribution of time, energy and/or talent that fosters social, environmental or economic well-being without resulting in a financial benefit to the applicant.

Twenty-two awards valued at \$2,000 each are available: ten for students attending [Selkirk College](#), ten for [College of the Rockies](#), one for [Revelstoke Centre of the Okanagan College](#), and one for [Valemount Campus of the College of New Caledonia](#).

### Who Can Apply

Basin residents planning to attend college after a hiatus of more than one year from high school and enrolling full-time in a recognized undergraduate program leading to a degree, diploma or certificate at College of the Rockies, Selkirk College, the Valemount Campus of College of New Caledonia and the Revelstoke Centre of the Okanagan College.

### How to Apply

Applications and guidelines are available from each of the college's websites, or from [www.cbt.org/ccsa](http://www.cbt.org/ccsa).

### Deadline for Applications

June 30, 2010

### CONTACT

**Selkirk College, Development Department**  
1.888.953.1133 1.250.365.7292  
820 Tenth Street, Nelson, BC V1L 3C7  
[www.selkirk.ca](http://www.selkirk.ca)

**College of the Rockies, Student Services**  
1.877.489.2687 (Main) 1.250.489.2751 (local)  
2700 College Way, Box 8500, Cranbrook, BC V1C 5L7  
[www.cotr.bc.ca](http://www.cotr.bc.ca)

**College of New Caledonia, Valemount Campus**  
1.888.690.4422 1.250.566.4601  
99 Gorse St., Box 789 Valemount, BC V0E 2Z0  
[www.cnc.bc.ca](http://www.cnc.bc.ca)

**Okanagan College, Revelstoke Centre**  
1.250.837.4235  
Bag 4500, 11401 First St. West, Revelstoke, BC V0E 2S0  
[www.okanagan.bc.ca](http://www.okanagan.bc.ca)

## COLUMBIA BASIN YOUTH GRANTS

Columbia Basin Youth Grants (CBYG) is a funding program, with both large and small grants, that supports ideas coming from Basin youth that benefit Basin youth. The program supports projects that build youth capacity and leadership and involve youth at all stages of their development and implementation. Proponent support for applicants is provided during the application process.

### **Who Can Apply**

Applicants need to be, or sponsored by, a registered non-profit organization, aboriginal band, school district, local government, or other that may be applicable at CBT's discretion.

### **How to Apply**

Applicants should contact a Basin Youth Liaison who will determine the eligibility of the project and then assist the applicant(s) through the process. Application forms can be downloaded from CBT's website at [www.cbt.org/cbyg](http://www.cbt.org/cbyg) or from CBT's youth website at [www.scratchonline.ca/grants](http://www.scratchonline.ca/grants).

### **Deadline for Applications**

There are no deadlines for this program. Applications are reviewed on a continuous intake basis at meetings scheduled at two month intervals (January, March, May, July, September, November) of each year.

### **CONTACT**

Michelle d'Entremont, Basin Youth Liaison or Wayne Lundeberg, Manager, Youth Initiatives  
1.800.505.8998 or 1.250.365.6633  
[cbtyouth@cbt.org](mailto:cbtyouth@cbt.org)

## COMMUNITY DEVELOPMENT PROGRAM

The Community Development Program (CDP) is a flexible granting stream with a continuous intake. CBT staff work closely with organizations and communities to develop their projects and ideas, and provide support. Grants are provided to a range of community projects throughout the Basin.

### **Who Can Apply**

Incorporated entities and local governments that are undertaking a community project can work with CBT staff to apply. Because CBT wishes to be responsive to the varied needs of Basin communities, there are few restrictions on eligibility.

### **How to Apply**

Applicants must contact a CBT Community Liaison in your geographic area who will determine the eligibility of the project and then assist the applicant(s) through the process.

### **Deadline for Applications**

This is a continuous intake program. There are no deadlines for applications, and applications are reviewed frequently throughout the year.

### **CONTACT**

CBT Community Liaison  
1.800.505.8998 or 1.250.365.6633  
[info@cbt.org](mailto:info@cbt.org)

# COMMUNITY INITIATIVES AND AFFECTED AREAS PROGRAMS

The Community Initiatives and Affected Areas Programs (CIP/AAP) are CBT's largest and longest running programs. This year the programs will be supporting communities with \$3.3 million, the final year of a three-year \$10 million commitment.

All areas of the Basin receive CIP funding, while additional AAP funds are allocated to areas of the Basin most affected by dam construction under the Columbia River Treaty. These areas are part of the Arrow, Kinbasket, Duncan and Kooconusa Reservoirs.

Funds for these programs are allocated on a per capita funding formula and are distributed once a year to our delivery partners: the Regional Districts of East Kootenay, Central Kootenay, Kootenay Boundary, City of Revelstoke, Town of Golden, Village of Valemount and the Ktunaxa Nation Council. Decision-making on how to disburse funds is community-based.

Applications for funding through these programs are made directly to the local delivery partner in your area.

## Who Can Apply

Basin residents and organizations.

## How to Apply

For information on how to apply contact your local government at the addresses below.

## Deadline for Applications

Deadlines vary from one region to another, but generally application deadlines are in February or March and decisions are finalized in April or May of each year. Check with your local government for current deadlines in your area.

## CONTACT

### City of Revelstoke

Debra Wozniak, Special Projects Coordinator  
Box 170  
Revelstoke, BC V0E 2S0  
1.250.837.5345 Main  
1.250.837.4223 Fax

### Regional District of Central Kootenay

Karen Armstrong, Administration Clerk  
Box 590, 202 Lakeside Drive  
Nelson, BC V1L 5R4  
1.800.268.7325 Toll Free  
1.250.352.8190 Main

### Regional District of East Kootenay

Shannon Moskal, Deputy Manager of Administration  
19-24th Avenue South  
Cranbrook, BC V1C 3H8  
1.888.478.7335 Toll Free  
1.250.489.2791 Main

### Town of Golden

Box 350  
Golden, BC V0A 1H0  
1.250.344.2271 Main

or

### Regional District of Kootenay Boundary

Sharon Toupin, Accounting Clerk  
#202-843 Rossland Avenue  
Trail, BC V1R 4S8  
1.800.355.7352 Toll Free  
1.250.368.9148 Main

### Village of Valemount

Sandy Salt, Deputy Director of Corporate Services  
Box 168  
Valemount, BC V0E 2Z0  
1.250.566.4435 Main  
1.250.566.4249 Fax

### Ktunaxa Nation Council

Gwen Phillips, Interim Director of Corporate Services  
7468 Mission Road  
Cranbrook, BC V1C 7E5  
1.250.417.4022 Main  
1.250.489.5760 Fax

Ryan Watmough, Executive Director  
Golden and District Community Foundation  
1.250.344.8610

## ENDOWMENT SUPPORT FOR COMMUNITY FOUNDATIONS

The Endowment Support for Community Foundations program encourages registered new emerging community foundations in the Basin through an endowment matching program. CBT will match endowment funds raised by communities to a maximum of \$50,000.

### **Who Can Apply**

New Community Foundations in the Basin who are members of the Community Foundations of Canada and have status as a federally registered charity.

### **How to Apply**

Contact a CBT Community Liaison as early as possible when forming a new community foundation.

### **Deadline for Applications**

This is a continuous intake program. There are no deadlines for applications.

### **CONTACT**

CBT Community Liaison  
1.800.505.8998  
[info@cbt.org](mailto:info@cbt.org)

## ENTERPRISING NON-PROFITS PROGRAM

Enterprising Non-Profits (enp) is a granting program that assists non-profit organizations in starting or expanding a social enterprise business. Social enterprise refers to business ventures operated by non-profits, whether they are societies, charities or co-operatives. The enp program provides resources and matching grants of up to \$10,000 for technical assistance along the entire business development path. enp is a partnership of eight funders including CBT.

### **Who Can Apply**

Non-profit organizations

### **How to Apply**

To apply for funding, organizations are required to attend a one-day orientation session. Contact the enp program for dates.

### **Deadline for Applications**

This program has a bi-annual intake in the spring and fall.

### **CONTACT**

David LePage, Program Manager  
Enterprising Non-Profits  
[www.enterprisingnonprofits.ca](http://www.enterprisingnonprofits.ca)  
604.871.5477

Michele Cherot (Local enp Contact)  
Greater Trail Community Skills Centre  
[mcherot@communityskillscentre.com](mailto:mcherot@communityskillscentre.com)  
250.368.5316 x214

## ENVIRONMENTAL INITIATIVES PROGRAM

The Environmental Initiatives Program (EIP) focuses on providing funding for community-initiated and community-supported project applications. Part of the program intent is to encourage education and awareness for all generations about Basin ecosystems and associated human interactions.

CBT is looking to residents and groups in the Basin for innovative projects that will help strengthen Basin-wide ability to meet environmental challenges. There are two types of funding available through the EIP – small grants for less technical projects up to \$5,000 and large grants to a maximum of \$20,000.

CBT staff are available to provide some degree of assistance to proponents during the project/proposal development stage of EIP applications. There may also be a limited opportunity to access specific technical assistance.

### **Who Can Apply**

Residents (community groups, clubs or organizations, or individuals in partnership with one of these organizations) located in the CBT region. Proposals from provincial, national or international organizations will be considered provided the applicant can demonstrate a significant and meaningful partnership arrangement with a Basin community and/or organization.

In general, the aim of the EIP is to meet community/public rather than private needs. Any individual or private sector proposal submitted must be sponsored by a community group or similar organization and must clearly demonstrate community support. Only those proposals targeting EIP eligible activities within CBT's area will be considered.

### **How to Apply**

Application guides and forms are available on CBT's website at [www.cbt.org/eip](http://www.cbt.org/eip).

### **Deadline for Applications**

April 1, 2010

### **CONTACT**

Rick Allen, Program Manager, Environment at [rallen@cbt.org](mailto:rallen@cbt.org) or 1.800.505.8998 or  
Tracy Amies, Administrative Assistant at [tamies@cbt.org](mailto:tamies@cbt.org) or 1.800.505.8998

## SUMMER WORKS PROGRAM

The Summer Works Program, delivered in partnership with College of the Rockies, was created to support the success of small business and social enterprise in the Basin, as well as provide summer jobs for students in the region. Benefits include a wage and training subsidy for high school and college students.

### **Who Can Apply**

Small business and social enterprise located in the Basin.

### **How To Apply**

Application guides and forms are available on CBT's website at [www.cbt.org/summerworks](http://www.cbt.org/summerworks).

### **Deadline For Applications**

Applications will be accepted on a first come, first served basis, and individually assessed against the program criteria until the allocated funding for the program is fully dispersed.

### **CONTACT**

College of the Rockies at 1.250.489.2751 ext. 3644 or 1.877.489.2687 ext. 3644 or email [summerworks@cbt.org](mailto:summerworks@cbt.org).

# TRAINING FEE SUPPORT PROGRAM

The Training Fee Support Program (TFS) is a bursary-style program that promotes access to education or training that helps Basin residents adapt to meet employment needs. Residents can access up to \$800 to help pay tuition or course fees for short-term training and for education essential to securing employment. Funds are paid directly to the education or training institution on behalf of the student.

## Who Can Apply

Basin residents who are unemployed or under-employed may apply. Contact your local Employment Assistance Services Office for further details and eligibility criteria.

## How to Apply

This program is delivered through Employment Assistance Services Offices helping individuals prepare for, find, and maintain employment. Contact your local Employment Assistance Services Office to arrange an initial consultation with an employment counsellor.

## Deadline for Applications

This is a continuous intake program. Applications are accepted on an ongoing basis.

## CONTACT

AGENCY NAME	LOCATION	ADDRESS	PHONE
Alpine Employment Resource Centre	Kimberley	155 Howard Street Kimberley, BC V1A 2G5	250.427.7720
Ashland Training Centre	Castlegar	1414 Columbia Avenue Castlegar, BC V1N 3K3	250.365.0966
Career Development Services	Trail	1565 Bay Avenue Trail, BC V1R 4B2	250.364.1104
Columbia Valley Employment Centre	Invermere	1313 – 7 <sup>th</sup> Avenue South, Box 957 Invermere, BC V0A 1K0	250.341.6889
Elk Valley Job Seekers	Fernie	302C – 2 <sup>nd</sup> Avenue, Box 1140 Fernie, BC V0B 1M0	250.423.4204
Golden Employment Services	Golden	513 – 9 <sup>th</sup> Avenue North, Box 2222 Golden, BC V0A 1H0	250.344.5413
Greater Trail Community Skills Centre	Trail	123 – 1290 Esplanade Trail, BC V1R 4T2	250.368.6360
Job Seekers Resource Centre	Cranbrook	24 – 11 <sup>th</sup> Avenue S. Cranbrook, BC V1C 2P1	250.489.5117
Ktunaxa/Kinbasket Employment & Training Development	Cranbrook	7472 Mission Road Cranbrook, BC V1C 7E5	250.420.2701
Kootenay Career Development Society	Nelson	203 – 514 Vernon Street Nelson, BC V1L 4E7	250.352.6200
Kootenay Career Development Society	Slocan	915 Harold Street Slocan, BC V0G 2C0	250.355.2840
Kootenay Employment Services (KES)	Creston	119 – 11 <sup>th</sup> Avenue N, Box 548 Creston, BC V0B 1G0	250.428.5655
Lower Columbia All First Nations Aboriginal Employment and Training Office	Castlegar	Box #4, 1402 Columbia Avenue Castlegar, BC V1N 3K3	250.304.2246
Metis Employment & Training	Cranbrook	Suite #2, 131 – 7 <sup>th</sup> Avenue South Cranbrook, BC V1C 2J3	250.417.3305
Outreach Employment Services	Nakusp	205 – 6 <sup>th</sup> Avenue NW, Box 100 Nakusp, BC V0G 1R0	250.265.3318
Outreach Employment Services	New Denver	317 – 6 <sup>th</sup> Avenue New Denver, BC V0G 1S0	250.358.2433
Revelstoke Employment Services Centre	Revelstoke	117 Campbell Avenue, Box 3019 Revelstoke, BC V0E 2S0	250.814.0244
Valemount Learning Centre	Valemount	99 Gorse Street, Box 789 Valemount, BC V0E 2Z0	250.566.4601

# YOUTH COMMUNITY SERVICE AWARD

CBT's Youth Community Service Award (YCSA) provides up to 45 awards valued at \$2,000 each for the first year of post-secondary education or training. This award is based on volunteer service. Communities with a graduating class less than 25 will receive one award; those with up to 75 students will receive two awards; and those with more than 75 graduating students will receive three awards.

## Who Can Apply

Basin students who will graduate from a Basin high school, alternate school, or other institution, which grants Ministry of Education recognized graduation diplomas.

## How to Apply

Application forms are available at senior secondary schools or on CBT's website at [www.cbt.org/yкса](http://www.cbt.org/yкса). Applications must be submitted to the public senior secondary high school where the applicant resides.

Castlegar  
Elkford  
Kaslo  
New Denver  
South Slovan

Cranbrook  
Fernie  
Kimberley  
Revelstoke  
Sparwood

Crawford Bay  
Golden  
Nakusp  
Rossland  
Trail

Creston  
Invermere  
Nelson  
Salmo  
Valemount

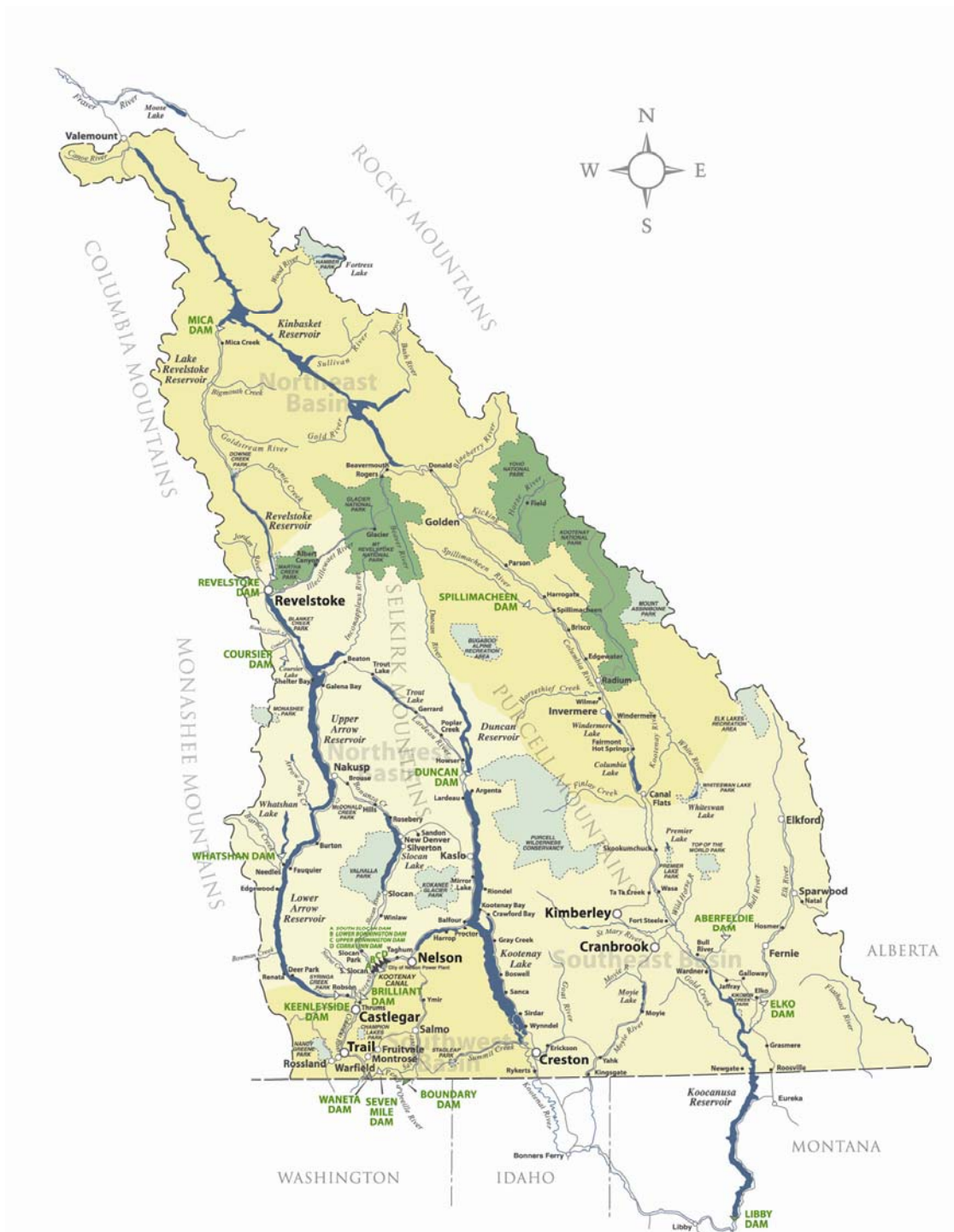
## Deadline for Applications

April 16, 2010

## Contact

Local Senior Secondary School

# CBT REGION



## CONTACT US

Wayne Lundberg  
Community Liaison for  
Southwest Basin  
300, 445- 13<sup>th</sup> Ave  
Castlegar, BC  
1.800.505.8998  
1.250.304.1634  
[wlundberg@cbt.org](mailto:wlundberg@cbt.org)

Jennifer Krotz  
Community Liaison for  
Southeast Basin  
828D Baker Street  
Cranbrook, BC  
1.800.505.8998  
1.250.426.8810  
[jkrotz@cbt.org](mailto:jkrotz@cbt.org)

Katherine Hamilton  
Community Liaison for  
Northeast Basin  
Box 393  
512 8<sup>th</sup> Avenue North  
Golden, BC  
1.800.505.8998  
1.250.344.2914  
[khamilton@cbt.org](mailto:khamilton@cbt.org)

Lynda Lafleur  
Community Liaison for  
Northwest Basin  
Box 220, 220 Broadway  
Nakusp, BC  
1.800.505.8998  
1.250.265.9937  
[llafleur@cbt.org](mailto:llafleur@cbt.org)